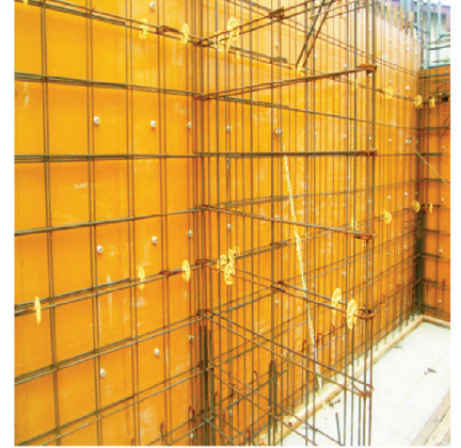
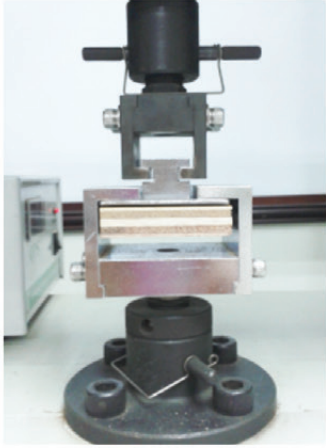


# Urethane Coated Plywood (UCP)

UCP is a formply that is manufactured from concrete forming plywood and coated with urethane paint on the surface in order to increase the panel durability and is reusable.



**Cement Slurry Repellent!**



*Droplet of water & alkaline solution on the Panel Edge*

### Advantages

- ✓ Strong & rigid panels
- ✓ Easy to clean & reusable
- ✓ Easy to repair
- ✓ Resistant to alkalinity & heat generation in concrete forming
- ✓ Environmental friendly
- ✓ Reduce construction waste & CO<sub>2</sub> emission
- ✓ Biodegradable material
- ✓ User friendly

### NOTE!

Always apply form oil on your formwork surface. It will decrease water permeability & penetration significantly. Hence, increase the reusable cycle of the formwork.

If the product is trimmed at the work site, it is recommended that the edges are to seal with waterproof paint to avoid panel damage caused by capillary penetration of moisture.

### Product Name: SY e-Coat

Property	Common Specification	Applicable Standards
Thickness	12mm / 15mm	
Sheet Size	600 x 1,800mm / 900 x 1,800mm	
Glue Type	Melamine Urea Formaldehyde Resin (MUF)	
Wood Material	Hardwood Species / Planted Tree Material / PEFC Certified Material	
Bending Strength	JAS Certified	JAS for Plywood
Resistance to Water	Type 1	JAS for Plywood
Edge Sealing	Fully sealed with 3 layers of water repellent sealant to minimize moisture intake	
Reuse Time	Capable of reusable for more than 10 cycles depending on its material and good site formwork practice**	

\*Relevant and appropriate products requirement is available upon request \*\*Subject to Conditions